

IMPORTANT NOTE:

THIS INFORMATION IS ONLY MEANT TO SHOW HELPFUL EXAMPLES OF HOW HARDWARE MAY BE USED. IT IS NOT MEANT TO BE THE INSTALLATION INSTRUCTIONS FOR A PROJECT.

PLATFORM HARDWARE MUST BE INSTALLED ACCORDING TO ENGINEER DESIGNED AND APPROVED DRAWINGS AND SPECIFICATIONS FOR YOUR PARTICULAR PROJECT.

DO NOT INSTALL PLATFORM HARDWARE ACCORDING TO THESE INSTRUCTIONS WITHOUT ENGINEER APPROVED DRAWINGS DESIGNED FOR YOUR SPECIFIC PROJECT.

ALWAYS INSTALL ACCORDING TO YOUR ENGINEER'S SPECIFICATIONS AND INSTRUCTIONS.

NEVER EXCEED ENGINEER'S SPECIFICATIONS FOR YOUR PLATFORM REGARDLESS OF HARDWARE CAPACITY.

# X-Plate Anchor Plate

*X-Plate Anchor Plate is an end connection solution for securing the horizontal main support cables to the structure. The X-Plate is bolted to a surface such as a concrete abutment or pier to anchor the main support cables.*

## X-PLATE INSTALLATION ( Fig. A1 )

1. Check concrete is solid and in good condition per anchor bolt requirements.
2. Mark off location on structure where Anchor plates are to be attached. Insure locations are at desired level and spacing according to Engineer's drawings. Draw horizontal line at desired height and vertical lines at desired main cable locations and proper cable spacing.
3. Place Anchor Plate in place and mark (4) holes. *If necessary use rebar locator and adjust Anchor Plate slightly so holes avoid rebar.*
4. Drill ONE hole and bolt Anchor Plate in place with ONE bolt. Follow Bolt manufacturer's instructions for drilling and installing bolt. Insure Plate is at proper position to attach support cables according to Engineer drawings. Insure Bolt surpasses depth of rebar. With Anchor plate in place drill remaining three holes ONE AT A TIME, insert and tighten each bolt BEFORE drilling next hole.

### INSTALLATION TIP:

*X-Plate Anchor Plate may be rotated clockwise or counter clockwise to allow Main Cable to clear ear plates.*

### **TOOLS NEEDED**

Hammer Drill  
(minimum 3/4")  
Impact wrench

*Follow Anchor Bolt Manufacturers instructions for installation of Anchor Bolts to secure Anchor Plate.*

**\* MAKE SURE CONCRETE IS SOUND**

**\*CHALK OUT PLATE PLACEMENT**

**\*MAINTAIN PROPER CABLE SPACING**

**\*INSTALL ONE BOLT AT A TIME**

**\*PROPER CABLE TENSION FOR PLATFORM USE**

X-Plate Anchor Plate tested over **115,000 LBS** on CN-225 450,000LB Tension Test Machine. This should be well above the capacity your project may require.

**Consult with Engineer specifications to insure capacity requirements.  
DO NOT EXCEED ENGINEER'S LOAD SPECIFICATIONS.**



**ANCHOR BOLTS**  
*Anchor Bolts MUST surpass depth of rebar in concrete.*  
**USE ANCHOR BOLT LENGTH SPECIFIED BY ENGINEER'S DRAWINGS FOR YOUR PROJECT'S REQUIREMENTS.**

**ALWAYS WEAR  
EYE AND FALL  
PROTECTION!**

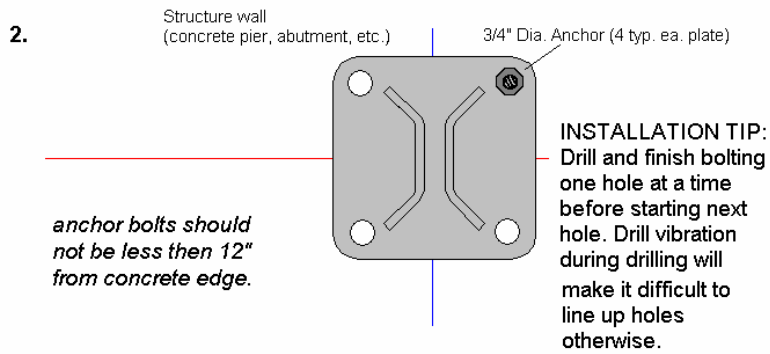
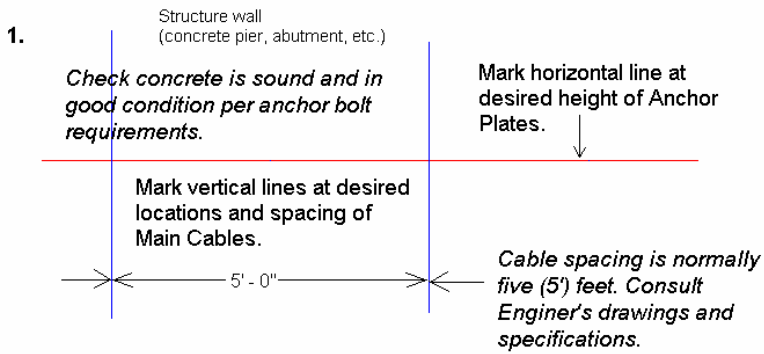


*EZ ACCESS INC.*

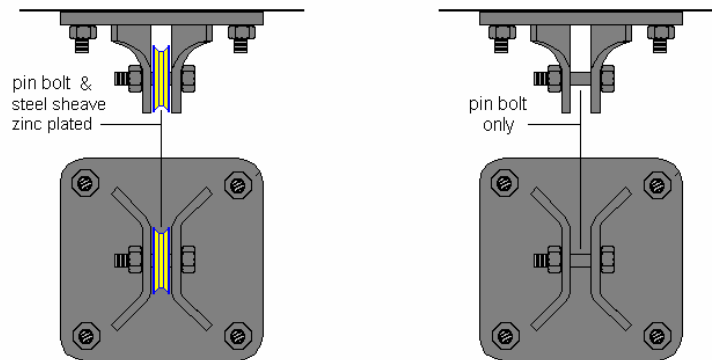
*www.bridgeplatforms.com*

*1.866.444.4345*

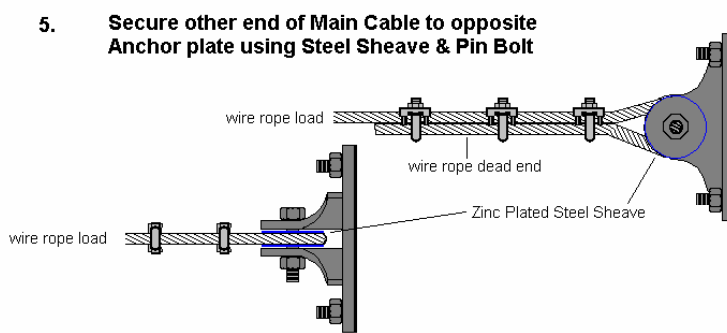
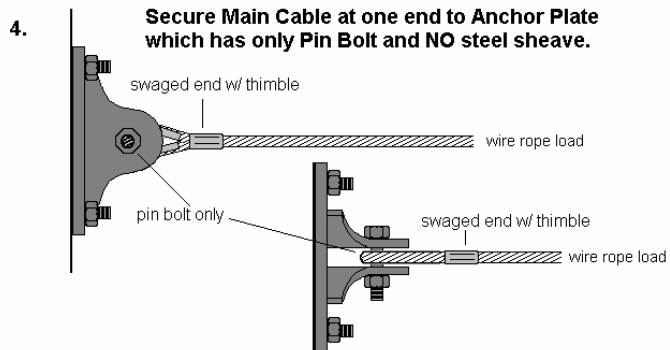
Phase -1



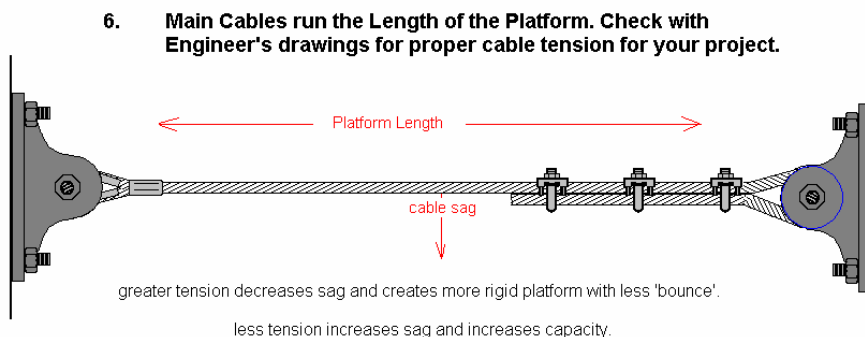
3. Install Anchor plates with pin bolts & steel sheaves along one side and Anchor plates with pin bolts only on opposing side.



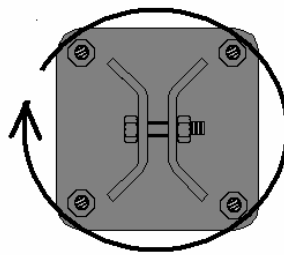
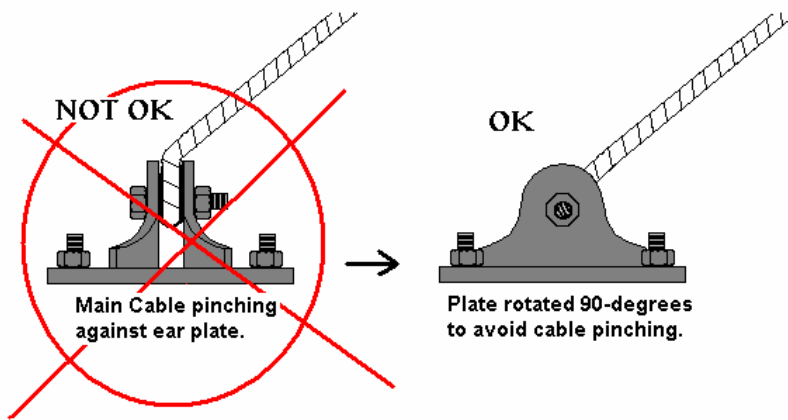
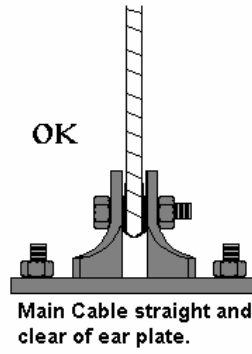
Drawing Not to scale. For illustration purposes only.



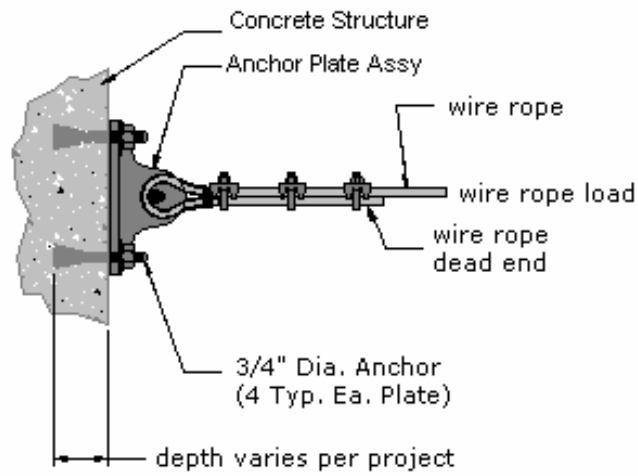
The Zinc Plated Solid Steel Sheave eliminates the need for a snatch block.



Drawings not to scale

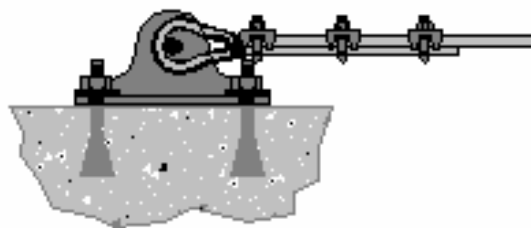


**IMPORTANT: Consult Engineer's Drawings and Specifications for proper positioning of Anchor Plate.**



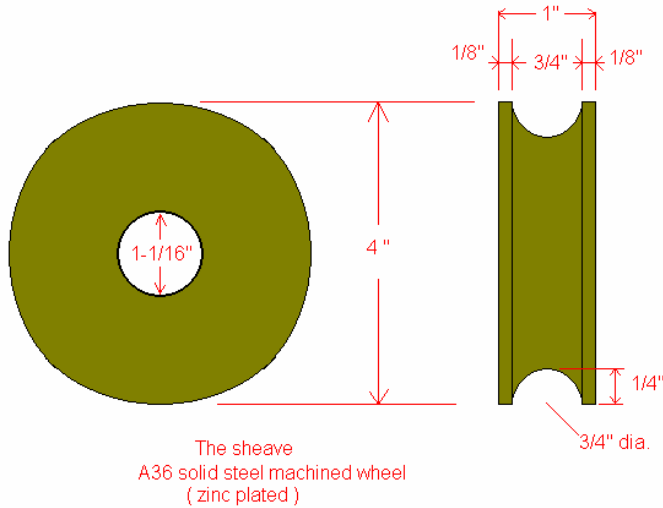
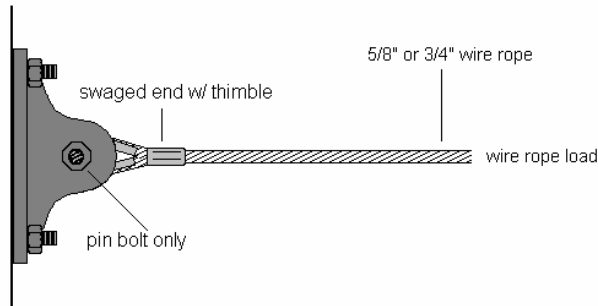
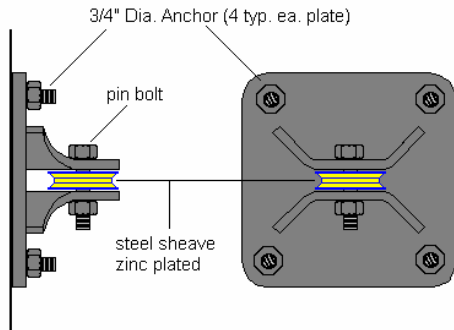
VERTICAL INSTALLATION

**DO NOT EXCEED ENGINEER'S LOAD SPECIFICATIONS**  
**DO NOT EXCEED ANCHOR BOLT MANUFACTURER'S LOAD CAPACITY**



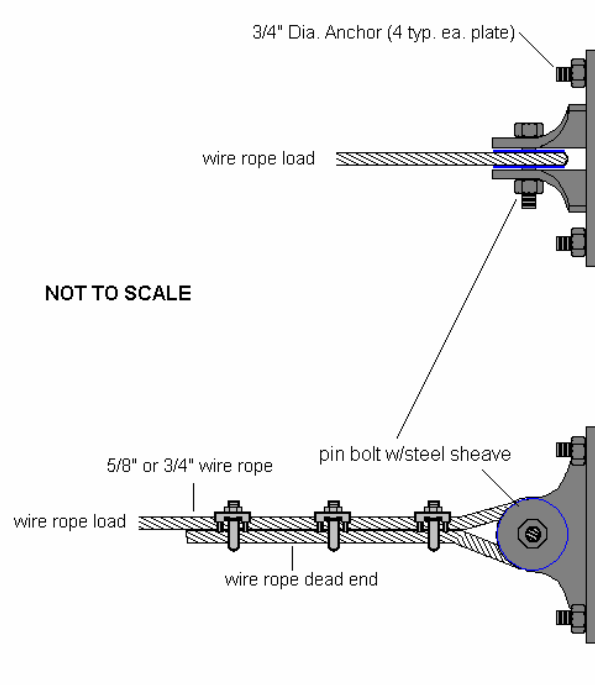
HORIZONTAL INSTALLATION

### X-PLATE ANCHOR PLATE w/ zinc plated steel sheave



NOT TO SCALE

**X-PLATE ANCHOR PLATE  
w/ zinc plated steel sheave**



The steel sheave eliminates the need for a snatch block and makes it easier to install the main cables.

The zinc plate solid steel sheave of the **X-Anchor Plate** allows the main cable to install easily around the pin bolt and eliminates the need for an expensive snatch block.

With the swaged end of the main cable attached to the pin bolt of one anchor plate, you simply run the tail end of the main cable around the steel sheave of the second anchor plate and apply tension. Once the desired tension is achieved secure the cable in place with cable clips. Three(3) with 5/8" cable, four(4) with 3/4" cable. Be sure to follow wire rope and cable clip manufacturers specs for assembly.

The steel sheave is designed to handle both 5/8" and 3/4" wire rope cable for greater versatility in platform capacity and design.